

SCHOOL OF SOCIAL WORK
**IMPACT
REVIEW**
2025



LOYOLA
UNIVERSITY CHICAGO

TABLE OF CONTENTS

- 1 Dean's Message
- 2 By the Numbers/Highlights/
Academic Programs
- 4 Scholarship in Action
- 6 Centers and Institutes
- 7 Recent Book Publications
by SSW Faculty
- 8 Scholarly IMPACT
- 10 Faculty and Doctoral Students

MISSION STATEMENT

Loyola University Chicago School of Social Work provides transformative education for practice-informed social work. The School advances rich and diverse knowledge grounded in empowering work with clients and organizations from a participatory, person-in-environment perspective. We promote social justice through macro, meso, and micro practice. "Transformative education" reflects our commitment to engaging students to be effective change agents for social justice in a global context. "Practice-informed social work" refers to a strengths-based, client-centered focus in working with individuals, families, groups, communities, and environmental systems.



Dean's Message

IT IS WITH PRIDE THAT I PRESENT THE 2025 *IMPACT* Review of Loyola University Chicago's School of Social Work (LUC/SSW). As both Dean and alumnus, I am honored to share the extraordinary research, scholarship, and service advanced by our faculty.

Guided by Jesuit values, this work embodies the principals of *cura personalis*, caring for every aspect of a person; *magis*, the pursuit of excellence for the greater good; and the concept of *people for and with others*, working in solidarity with the most vulnerable in pursuit of justice and equality. Our research is never for its own sake; it seeks to uplift communities, confront urgent challenges, and drive systemic change while preparing the next generation of social work clinicians, leaders, and scholars.

This report highlights how our faculty turn scholarship into impact: advancing human rights through work with migrants, reimagining child welfare systems, addressing inequities in health, building models of restorative justice that strengthen communities, and more. Across all these domains, our work remains anchored in the values of human dignity, social responsibility, and transformative action, and addressing the *Grand Challenges for Social Work* as set forth by the Council on Social Work Education.

Looking ahead, our charge for the coming year is to harness the full power of research to imagine and shape a more just future. With the launch of our new simulation center, we are expanding how we prepare students—and using research to evaluate how this innovative center can make a lasting impact on the social work field and the communities we serve.

We will continue to pursue the bold questions, deepen collaborations across disciplines and communities, and ensure our scholarship does more than generate knowledge. In doing so, we affirm Loyola's Jesuit mission and our shared responsibility to create a world rooted in dignity, equity, and compassion.

*In unity with the social work
research community,*

Patricia A. Findley, DrPH, MSW, LCSW
Dean and Professor



PATRICIA A. FINDLEY
DrPH, MSW, LCSW

Dean and Professor

LOYOLA NAMED AN R1 RESEARCH UNIVERSITY

LOYOLA UNIVERSITY CHICAGO HAS ATTAINED THE HIGHEST RESEARCH ACTIVITY CLASSIFICATION GRANTED BY THE AMERICAN COUNCIL ON EDUCATION AND THE CARNEGIE FOUNDATION FOR THE ADVANCEMENT OF TEACHING FOR 2025, JOINING 186 OTHER R1 INSTITUTIONS.

By the Numbers

28th **1st**

BEST GRADUATE PROGRAM IN SOCIAL WORK

ONLINE BILINGUAL MSW PROGRAM IN THE CONTINENTAL U.S.

\$6.9 M
IN CURRENT ACTIVE GRANT FUNDING*

56 ACTIVE RESEARCH PROJECTS

71% TENURE/TENURE TRACK FACULTY WITH ACTIVE GRANT FUNDING

LOYOLA NAMED AN R1 RESEARCH UNIVERSITY

71% OF FACULTY INVOLVE STUDENTS IN THEIR PUBLICATIONS

1,702 INTERNSHIP SITE PARTNERS

*FY 25 GRANT APPROPRIATION \$ FOR SSW ACCOUNTING UNITS, INTERNAL AWARDS AND NEW AWARDS THROUGH 10/1/25

Academic Programs

Degree Programs

BSW	MSW/JD
MSW Advanced Standing	MSW/MJ (Child/Family Law)
MSW	MSW/MA Social Justice
MSW Online	MSW/MA Women's Studies
MSW Online Advanced Standing	MSW/MPH
MSW Online Bilingual (Maestría Bilingüe en Trabajo Social en Línea)	Ph.D. (Social Work)
MSW Online Bilingual Advanced Standing (El Nivel Avanzado de la Maestría en Trabajo Social Bilingüe)	* Optional Ignatian Pedagogy Certificate, Anti-Racist Pedagogy Certificate offered by LUC

Certificate Programs

Certificate in Alcohol & Other Drug Counseling
Certificate in Advanced School Mental Health
Certificate in Advanced Psychotherapy

Highlights

LOYOLA HONORS

Dr. Abha Rai was appointed as a university-wide READI (Racial justice, Equity, Accessibility, Diversity, and Inclusion) Excellence Coach for 2025-2026.

Dr. Marquitta Dorsey received a Social Justice Research Summer Fellowship for Undergraduate Research from the Center for Engaged Learning, Teaching, and Scholarship (CELTS) and the Loyola Undergraduate Research Opportunities Program (LURP).

Dr. Julia Pryce received an LUC Provost Fellowship and an Arrupe College Award to work with two undergraduate students on developing research skills and projects.

30 LOYOLA SSW STUDENTS

in BSW and MSW programs received university honors, including the Aspire Scholarship, Alpha Sigma Nu Awards, and honors for Interdisciplinary Studies, Academic Excellence, Community Engagement, and Internships.

CSWE HONORS

The Council on Social Work Education (CSWE) honored SSW faculty and staff in 2025, appointing **Dr. Rana Hong**, the MSW Program Director, to a 3-year term as a CSWE Site Visitor, and **Mini Datta, MSW**, Director of Internships, to a 3-year term on the CSWE Board of Accreditation. **Dr. Michael Dentato** was awarded the Sexual Orientation, Gender Identity, and Expression (SOGIE) Scholarship Award by the CSWE Council on Sexual Orientation, Gender Identity & Expression (CSOGIE).

FACULTY UPDATES/ANNOUNCEMENTS

LUC/SSW appointed **Dr. John Orwat** to a new post as Associate Dean for Faculty Development. In this role, Dr. Orwat will work with individual faculty on enhancing their teaching, scholarship, and research skills and provide professional mentorship for junior, mid-career, and senior faculty.

We welcome to the LUC/SSW faculty starting in the fall of 2025: Assistant Professors **Dr. LaTasha Smith** and **Dr. Amzie Moore**, and Clinical Associate Professor **Dr. Shannon Dunn**.



Congratulations to **Dr. Brian Kelly** who was promoted to full professor.

Congratulations to **Dr. Marion Malcome** on passing her third year mid-probationary review.

STUDENT SCHOLARSHIP

The new issue of **Praxis**, LUC/SSW's journal which is peer reviewed and published entirely by social work students, is now available.

AGENCY OF THE YEAR AWARD

Thresholds, one of the oldest and largest providers of recovery services for persons with mental illnesses and substance use conditions in Illinois, was recognized by LUC/SSW as our Agency of the Year for 2025.

SELECT AWARDS

\$452,000

was awarded by the **Illinois Certification Board** and the **Illinois Department of Human Services** to continue funding MSW students and practicing clinicians who are completing requirements to gain Certified Alcohol and Drug Counselor (CADC) credentials with tuition and related expenses. **Dr. Marcy Wilroy** is PI and directs the program.

\$65,000

was awarded by the **Healthcare Foundation of Northern Lake County** to support scholarships for MSW students, an initiative led by Principal Investigator **Dr. Priscila Freire**.

\$325,000

was awarded over the past 19 years to SSW and **Dr. Katherine Tyson McRea** from Chicago's **After School Matters** to support programs for low-income Chicago youth of color, led by doctoral and MSW students.



Social work research, social justice, and the Jesuit mission



Marion Malcome, Ph.D., Nathan Perkins, Ph.D., Marquitta Dorsey, Ph.D., and Abha Rai, Ph.D.

In the Jesuit tradition, research can be a powerful tool for social justice by uncovering inequity, amplifying marginalized voices, and facilitating service for and with others. As researchers in the School of Social Work, Marquitta Dorsey, Ph.D., Marion Malcome, Ph.D., Nathan Perkins, Ph.D., and Abha Rai, Ph.D. embody this connection and exemplify the LUC mission through their research on topics including immigrant communities, Black mothers, sibling relationships, trauma and violence, and the sexual and reproductive health of young women.

Their research is deeply rooted in a commitment to *cura personalis*, caring for every aspect of a person, by acknowledging the full range of systemic influences that shape health and development, including cultural, social, and familial factors. Their innovative techniques and commitment to continuous improvement also reflect the Jesuit emphasis on *magis*, the pursuit of excellence for the greater good. Above all, their research exemplifies the value the Jesuit mission places on *people for and with others*, as they work in solidarity with the most vulnerable in pursuit of justice and equality.

Through their scholarship, these four researchers are having a real impact locally and nationally – but they are not stopping there. Their work provides a powerful learning laboratory that supports the development of the next generation of social work scholars.

AGENCY AND VOICE FOR YOUNG BLACK WOMEN:

Marquitta Dorsey, Ph.D.

Dr. Dorsey focuses her scholarship on how systems and relationships shape the well-being of Black adolescent and young adult females. Much of her work examines sexual and reproductive health, exploring how family involvement, healthcare access, and educational contexts influence decision-making and agency. By centering the voices of young women, Dorsey challenges previously accepted narratives about Black women and highlights their resilience, agency, and strength. In her recent book, *Understanding Diversity in Human Behavior and Development in the Social Environment* (Springer, 2024), Dorsey emphasizes how factors such as race, gender, class, and culture must be considered together to understand human development. This work not only informs future social workers but also reflects her broader commitment to ensuring that research and practice reflect the realities for Black womanhood.

RESILIENCE IN THE FACE OF RACISM:

Marion Malcome, Ph.D.

Dr. Malcome's research sits at the intersection of race, place, and mental health. In her recent article, *A qualitative exploration of how Black mothers experiencing poverty*

make sense of the strong Black woman stereotype (*Psychology of Women Quarterly*, 2024), Malcome investigates how the idea of the “strong Black woman,” which can be a marker of resilience and pride, can carry hidden costs by imposing expectations of unyielding strength that keep Black women from expressing vulnerability or accessing support. For women facing both racism and economic hardship, the pressure deepened isolation and strained mental health. Malcome's work reframes the stereotype as a complex social force that deserves careful attention from practitioners and policymakers alike, and informs her work with community partners to develop *Heal togetHER*, a novel community-based peer support model of mental wellness for Black women, providing them a space to be open about their experiences.

IDENTIFYING HIDDEN HARMS IN THE FAMILY:

Nathan Perkins, Ph.D.

Dr. Perkin's research brings long-overdue attention to physical and emotional sibling aggression which can leave lasting effects on children's mental health and development, especially when compounded by other family stressors. For example, in his recent study with colleague and frequent collaborator Rai, *Physical and emotional sibling violence among South Asian immigrants in the United States* (*Journal of Family*

Violence, 2024), Perkins explores how cultural expectations, migration-related stress, and family dynamics intersect to shape experiences of sibling violence. By focusing on a previously unstudied population, the study highlights both the universality of sibling violence and the unique contexts in which it unfolds.

HARNESSING TECHNOLOGY FOR JUSTICE:

Abha Rai, Ph.D.

For Dr. Rai, the future of social work research lies at the intersection of compassion and innovation. Her work focuses on communities often excluded from mainstream conversations, including immigrants, refugees, and survivors of gender-based violence, learning from their lived experiences to inform effective, evidence-based interventions. In her article *The needs for expanding the conceptualization and investigation of domestic violence among immigrants from South Asia: Implications for practice* (*Social Work*, 2024), she calls for practitioners to expand their understanding of domestic violence to respond more effectively to the communities in which they work. Dr. Rai's most recent work utilizes innovative technologies, such as wearable devices to measure stress and sleep patterns and AI tools for analyzing patterns and needs, allowing her to capture data and draw conclusions that would otherwise

be unobtainable, and use them to design evidence-based and culturally responsive interventions.

Investing in Future Researchers

Alongside their individual areas of scholarship, all four researchers also evoke the LUC mission values of *cura personalis*, *magis*, and *people for and with others* in their work with students, by providing a supportive environment for students to participate meaningfully in high-quality high-impact research. Dr. Rai and Dr. Perkins are in the process of launching the Research and Innovation Lab (RAIL), a space where both undergraduate and graduate students can critically explore pressing social and economic issues, generate meaningful knowledge, and advance evidence-based practice through collaborative inquiry, often in partnership with community-based organizations. In Spring of 2026, Dr. Dorsey and Dr. Malcome will launch the Social Work Undergraduate Research Lab (SWURL), offering undergraduates the opportunity to engage in applied research by participating in active social work and public health projects.

Students involved with RAIL and SWURL will enter the field of social work with an enhanced understanding not only of the clinical dimensions of the profession, but also of how research informs effective practice, policies, and social systems that impact marginalized individuals, families, groups, and communities. ■



Research can be a powerful tool for social justice by uncovering inequity, amplifying marginalized voices, and facilitating service for and with others.



Centers and Institutes

LUC School of Social Work faculty and students engage in research across a range of disciplines through centers and institutes that support a diverse community and value freedom of inquiry, pursuit of truth and care for others. Centers are a vehicle for grant funding to provide research training to students, engage with agency partners, and impact communities and individuals.

C-FIRST

The Center for Field Innovation, Research, Strategy, and Training (C-FIRST) engages community-based interventions and practice-based research that supports the sustainable implementation of innovative interventions to meet the unique challenges faced by organizations, clinicians, and students across Chicago and suburban communities. C-FIRST projects include interprofessional experiences learning about Screening, Brief Intervention, and Referral to Treatment (SBIRT), the Certificate of Advanced Brief Interventions for Substance Abuse among Multiple Communities (CABISAM), “In Conversation with C-FIRST” guest speaker opportunities, and other initiatives, funded in part through grants.

CIRA

The Center for Immigrant & Refugee Accompaniment (CIRA) supports the formation of social work professionals who, in solidarity, can accompany migrants in the construction of a more inclusive local and global community that affirms the human dignity of the person. CIRA affiliates engage in collaborative, interdisciplinary, and international research; advocacy and community engagement; residence programs for scholars; and direct accompaniment opportunities to listen and bear witness.

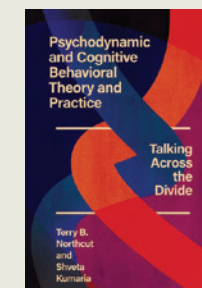
ECP

The Empowering Counseling Program - Participatory Science Initiative (ECP) serves youth of color and their families residing in low-income Chicago communities, providing free after school and summer program services, trauma-focused mental health care in schools and community agencies, and street-based social work to support participants and link them with resources. Services include advocacy for redress of human rights violations related to poverty and prejudice and focus on uplifting the strengths and cultural wealth of participant to respond creatively to the formidable problems of poverty, racial discrimination, community violence, educational disadvantage, and social exclusion.

FCTI

The Fostering Connections Training Institute (FCTI) engages caregivers, child welfare professionals, adult mentors, and foster parents in trainings focused on building skills toward improving relationships with youth in care. The training curriculum provides participants with evidence informed approaches to relationship development and psychological self-sufficiency, which can lead to higher quality relationships and improved goal achievement. Fostering Connections trainings and technical assistance are available to community agencies. FCTI evaluates participant skill development as well as the impact of the trainings on various outcomes and shares findings with agencies as one component of professional development.

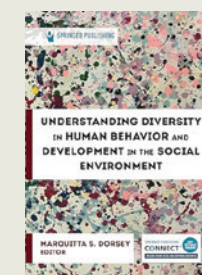
Recent Book Publications by SSW Faculty



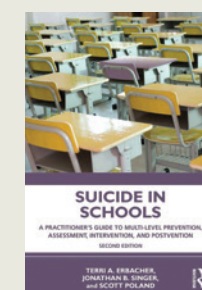
Northcut T. B., & Kumaria, S.
Bridging psychodynamic theory and cognitive behavioral practice.
Chicago, IL: Lyceum Books.
(Release date December 9th 2025)



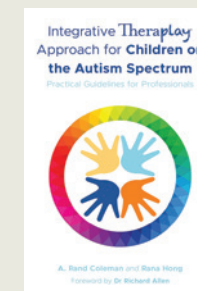
Fox, M., & Singer, J. B. (Eds.). (2025).
Podcasting in social work education: A way forward for educators. Routledge.
ISBN: 9781032215587



Dorsey, M. S. (Ed.). (2024).
Understanding diversity in human behavior and development in the social environment.
Springer Publishing Company.
ISBN: 9780826166517



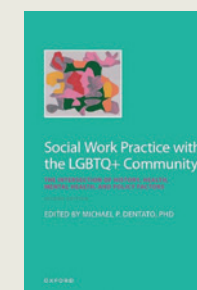
Erbacher, T., Singer, J. B., & Poland, S. (2024).
Suicide in schools: A practitioner's guide to multi-level prevention, assessment, intervention and postvention.
(2nd ed.). Routledge.
ISBN: 9780367141707



Coleman, R., & Hong, R. (2023).
Integrative Theraplay® for children on autism spectrum. Jessica Kingsley Publishers.
ISBN: 9781787750685



Hong, R., & Coleman, R. (2023).
Theraplay®: Innovations and integration
(Eds.). Jessica Kingsley Publishers.
ISBN: 9781787755918



Dentato, M. P. (Ed.). (2022).
Social work practice with the LGBTQ+ community: The intersection of history, health, mental health, and policy factors.
(2nd ed.). Oxford University Press.
ISBN: 978019753495



Lindaman, S., & Hong, R. (Editors). (2021).
Theraplay®: Theory, application, and implementation (Eds.).
Jessica Kingsley Publishers.
ISBN: 9781787750708



Polanco, G.; Lundy, M.; Vidal de Haymes, M.; Rositas-Sheftel, C. (2021).
Salud emocional para mujeres migrantes (Emotional health for migrant women). México: Editorial Universidad Iberoamericana.
ISBN: 978-607-417-760-2.

Welcome

from the Associate Dean for Research

DEAR COLLEAGUES,

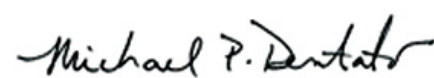
Welcome to the LUC/SSW Office of Research Development 2025 IMPACT Review which highlights faculty scholarship, research, honors, and clinical achievements! In the current political and economic climate, where it can feel more difficult than ever to move our vital research and scholarship agendas forward, we remain firmly committed to our Jesuit principles and the pursuit of justice and equality. We are so proud to share the IMPACT of our faculty and doctoral students over the past year, including:

- Faculty scholarship encompassing a broad range of research contributing to the social work field in areas related to practice methods and theory, poverty, race, violence, and mental health. Each year we map our school research clusters to the Grand Challenges of Social Work to highlight how our faculty's research aligns strongly with the profession at-large.
- Millions in funding from federal, foundation, and local sources, directly supporting student tuition stipends, as well as faculty engagement in migrant/refugee efforts, and practice with youth and families across Chicago. Congressional funding helped support the opening of our behavioral health simulation lab at the Water Tower campus this fall.
- Awards and recognition of the accomplishments of LUC/SSW faculty and doctoral students from LUC and a number of national organizations.

- Meaningful student engagement, with 71% of tenure track faculty involving undergraduate, graduate and doctoral students in research activities, including co-authorship in peer-reviewed journals as well as numerous state and national conference presentations.

It is also important to mention that each day our faculty are engaged in interprofessional education and practice, innovative curricula design and implementation, and thriving private practices. While these moments of impact may not be highlighted in a report like this, they are nevertheless part of what makes LUC/SSW such a special part of Loyola, Chicago, and the national and global social work community.

I would like to take a moment to recognize the many contributions of Dr. Paula Carney, our former LUC/SSW Director of Faculty Grants and Scholarship who retired in the spring, and officially welcome Sarah Weisz, who joins us this fall to serve in that pivotal role. Wishing our faculty and doctoral students continued successes in the year ahead and looking forward to highlighting more impressive work in the 2026 LUC/SSW IMPACT Review!



Michael P. Dentato, PhD, MSW
Associate Dean for Research & Professor

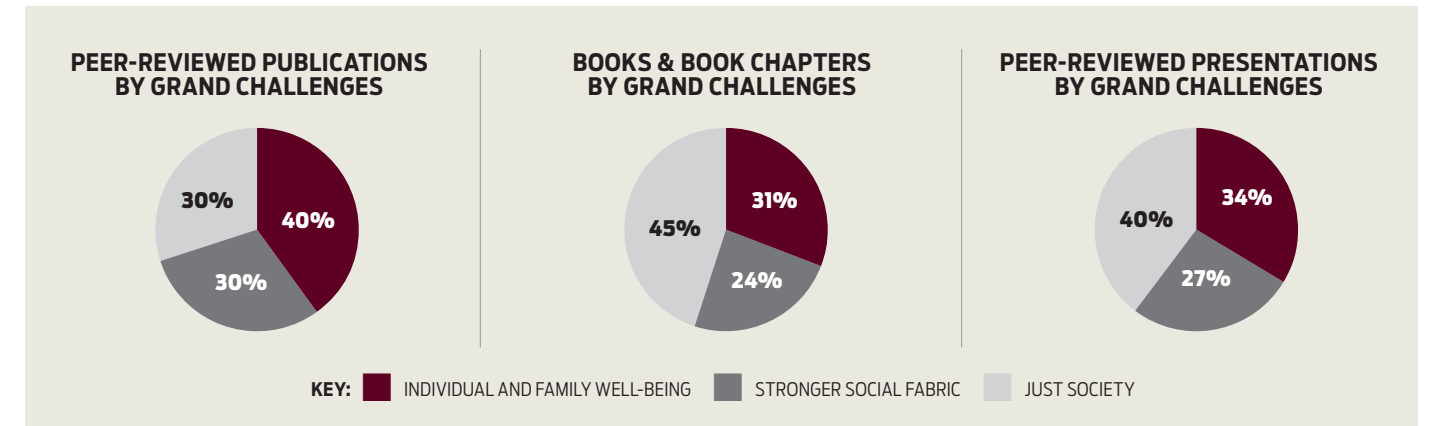


MICHAEL P. DENTATO
PHD, MSW

Associate Dean for Research & Professor

Addressing the Grand Challenges of Social Work

The Loyola University Chicago School of Social Work faculty is dedicated to research that intersects with many areas of social work. We've mapped SSW faculty scholarship to the three main categories defined by the Grand Challenges for Social Work: Stronger Social Fabric, Individual & Family Well-being, and Just Society, with more specific research sub-clusters shown below.



SUB-CLUSTERS

Individual and Family Well-being

Youth, Adults, & Older Adults:
Development Concerns, Well-being, & Resilience
Behavioral Health & Wellness, Health Equity, & Integrated System of Care
Violence: Lifespan and Structural

Just Society

Advocacy, Social Justice, Environmental, International, & Global Issues
Race, Gender, & Sexuality
Employment & Work

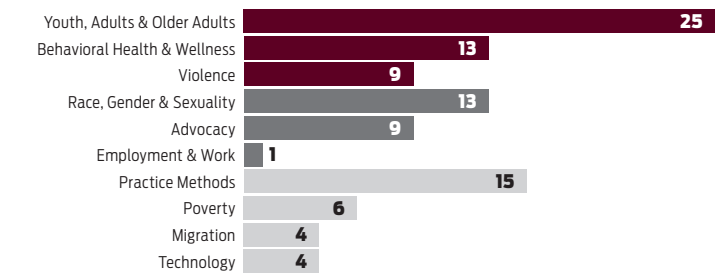
Stronger Social Fabric

Practice Methods, Theories, & Education
Migration, Refugees, & Human Mobility
Poverty, Housing Insecurity, & Homelessness
Technology & Innovation

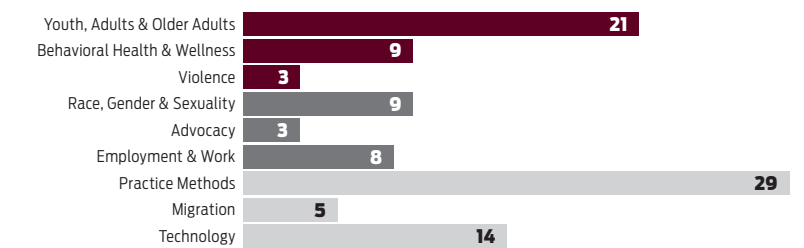
LOYOLA LEADS THE WAY

THE GRAND CHALLENGES FOR SOCIAL WORK NAMED LOYOLA AS ONE OF FOUR UNIVERSITY SOCIAL WORK PROGRAMS LEADING THE WAY ON CENTERING ITS RESEARCH AND SCHOLARSHIP AROUND THE GRAND CHALLENGES OF THE PROFESSION.

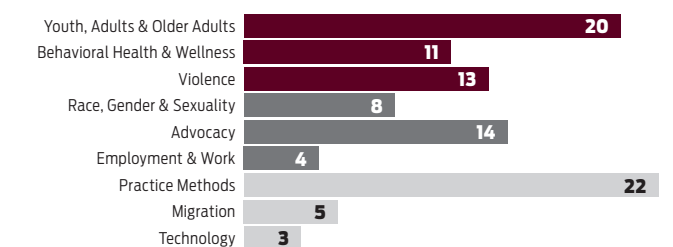
PEER-REVIEWED PUBLICATIONS (%) BY SSW SUB-CLUSTERS*



BOOKS & BOOK CHAPTERS (%) BY SSW SUB-CLUSTERS*



PEER-REVIEWED PRESENTATIONS (%) BY SSW SUB-CLUSTERS*



Faculty



Michael P. Dentato, Ph.D.
Professor; Associate Dean for Research;
Co-Director, C-FIRST
mdentato@luc.edu

Dr. Dentato focuses his effort as Associate Dean for Research on supporting faculty grant activity and the overall development of faculty as researchers and scholars. He also serves as Co-Director of the Center for Field Innovation, Research, Strategy, and Training (C-FIRST) at LUC/SSW. Dr. Dentato's scholarship and research centers upon the assessment of health and health disparities among sexual and gender minority populations; preparedness of social work students for affirming practice with diverse client populations; and the assessment of macro practice, interprofessional relationships, and effective non-profit leadership. He is the sole editor of two editions of the seminal text, "Social Work Practice with the LGBTQ+ Community, The Intersection of History, Health, Mental Health and Policy Factors," published by Oxford University Press. Dr. Dentato has over thirty years of community-based and consultant experience including clinical, administrative, and policy work throughout his tenure in New York City, Miami, and Chicago.

CONTRIBUTIONS TO SCHOLARSHIP CLUSTERS: Individual & Family Well-being (*Behavioral Health*); Just Society (*Race, Gender, & Sexuality*); Stronger Social Fabric (*Migration, Refugees & Human Mobility*)



Binita Donohue, MSW
Clinical Assistant Professor
bdonohue@luc.edu

Professor Donohue's passion is to help schools and organizations recognize systems of oppression and replace them with systems that are generative. As a free and appropriate education continues to be the only entitlement program available to every person in the U.S., the purpose of public schools becomes so much more than a space for teaching and learning. As an immigrant to the U.S., culture and race have always had a profound impact upon Professor Donohue's life. Building awareness of these dynamics in interpersonal and institutional practices is of great professional interest as she integrates identity awareness into her practice to help people uncover their true and full identities.

CONTRIBUTIONS TO SCHOLARSHIP CLUSTERS: Stronger Social Fabric (*Migration, Refugees & Human Mobility*)



Marquitta Dorsey, Ph.D.
Associate Professor
mdorsey5@luc.edu

Dr. Dorsey uses intersectionality to examine well-being and health equity for Black females as they interact within and across various systems including family, community, healthcare, and education. She has contributed to several community-based initiatives and professional undertakings where she actively engaged in and/or led after-school programming, youth gang interventions and prevention programs, juvenile justice interventions, child welfare systems, and homelessness projects. Related themes in Dr. Dorsey's scholarship address agency and voice, sexual autonomy and decision-making, paternal involvement, historical context, and intervention development for young adult Black females. Recently funded projects explore wellbeing and the impact of sexual health barriers; understanding the role of contextual factors, including social media and digital modalities on health decisions.

CONTRIBUTIONS TO SCHOLARSHIP CLUSTERS: Individual & Family Well-being (*Youth, Adults & Older Adults: Development Concerns, Well-being, & Resilience; Behavioral Health & Wellness, Health Equity, and Integrated Systems of Care; Violence: Lifespan & Structural*); Just Society (*Advocacy, Social Justice, Environment; International & Global Issues; Race, Gender, & Sexuality; Employment & Work*); Stronger Social Fabric (*Practice Methods, Theories & Education; Migration, Refugees & Human Mobility, Poverty, Housing Insecurity & Homelessness; Technology & Innovation*)



Patricia A. Findley, DrPH, MSW
Dean; Professor
pfindley@luc.edu

Dr. Findley is a clinician/researcher with a long history of working with adults and youth with disabilities and chronic illnesses. Her research interests are related to the exploration of numerous issues that impact these vulnerable populations and the care they receive in the community. Dr. Findley is a strong advocate for the integration of behavioral health in primary care, particularly for medically underserved populations. Her current work using an interdisciplinary team of health, behavioral health, and health economics researchers focuses on how economic stress can impact mental health.

CONTRIBUTIONS TO SCHOLARSHIP CLUSTERS: Individual & Family Well-being (*Youth, Adults & Older Adults: Development Concerns, Well-Being & Resilience; Behavioral Health & Wellness, Health Equity & Integrated Systems of Care; Violence: Lifespan & Structural*); Just Society (*Advocacy, Social Justice, Environmental, International & Global Issues; Race, Gender, & Sexuality, Employment & Work*); Stronger Social Fabric (*Poverty, Housing Insecurity & Homelessness*)



Diana Franco, DSW
Clinical Assistant Professor
dfranco@luc.edu

Dr. Franco's scholarly pursuits are centered upon examining and ameliorating the academic and social-emotional requisites of immigrant and undocumented youth. Additionally, she contributes her expertise as a trained volunteer clinician for Physicians for Human Rights (PHR) and the New Mexico Immigrant Law Center (NMILC).

CONTRIBUTIONS TO SCHOLARSHIP CLUSTERS: Individual & Family Well-being (*Violence: Lifespan & Structural*); Just Society (*Race, Gender, & Sexuality*); Stronger Social Fabric (*Migration, Refugees & Human Mobility; Practice Methods, Theories & Education*)



Priscila Freire, Ph.D.
Clinical Associate Professor; Associate Dean for Academics
pfreire@luc.edu

Dr. Freire's areas of practice experience includes intimate partner violence across the lifespan, perpetrators of intimate partner violence, trauma-informed practice, children and families, practice with immigrant communities, and mental health across diverse communities. She was involved in the development and launching of the Online Bilingual Program at LUC/SSW and currently focuses on student, faculty, staff, and curricular needs.



Rana Hong, Ph.D.
Clinical Assistant Professor; MSW Program Director
rhongl@luc.edu

Dr. Hong's research focuses on trauma, mental health, measurement development, and evaluation studies. Drawing on over 25 years of clinical experience across the lifespan, she integrates her practice expertise into her scholarship to advance social work practice. She contributes to the profession as a member of the Editorial Advisory Board for *Studies in Clinical Social Work: Transforming Practice, Education, and Research*, and supports the broader mental health community through her service on the Board of Directors of the EMDR International Association.

CONTRIBUTIONS TO SCHOLARSHIP CLUSTERS: Individual & Family Well-Being (*Behavioral Health & Wellness, Health Equity & Integrated Systems of Care; Youth, Adults & Older Adults: Development Concerns, Well-Being & Resilience*)



Brian Kelly, Ph.D.
Professor
bkelly6@luc.edu

Dr. Kelly's research explores current and historical uses of recreational, art, and music-based activities in social work and related fields, building on his background in audio engineering. He combines his clinical experience with individuals with substance use issues, and those experiencing homelessness and chronic health conditions to advance social work practice. Dr. Kelly is an advocate for the advancement of social work practice with groups and prioritizes group work in his teaching, research, and scholarship.

CONTRIBUTIONS TO SCHOLARSHIP CLUSTERS: Individual & Family Well-being (*Youth, Adults & Older Adults: Development Concerns Well-Being & Resilience*); Stronger Social Fabric (*Technology & Innovation*)



Caleb Kim, Ph.D.
Associate Professor
ckim4@luc.edu

Dr. Kim's research involves child/youth violence, global social work education, suicide, and Asian American immigrant youth/family issues. He is also interested in developing university-community collaborative projects that support at-risk youths and their families. Collaborating with Chicago Public Schools, Dr. Kim has directed the STOP School Violence project funded by the Department of Justice, Bureau of Justice Assistance since 2021. Over the last decade, he has successfully completed several federally funded projects such as Minority Youth Violence Prevention II, HRSA's Scholarship for Disadvantage Students, and SAMHSA's GLS Campus Suicide Prevention.

CONTRIBUTIONS TO SCHOLARSHIP CLUSTERS: Individual & Family Well-being (*Violence: Lifespan & Structural; Youth, Adults & Older Adults: Development Concerns, Well-Being & Resilience*); Just Society (*Employment & Work*); Stronger Social Fabric (*Migration, Refugees & Human Mobility*)



Maribel Lopez, Ed.D.

Clinical Associate Professor; Assistant Director, Online Bilingual MSW Program

mlopez38@luc.edu

Dr. Lopez has counseling experience working with children, families, individuals, couples, and youth. She is engaged in community education on women empowerment, early childhood education, substance use, and domestic violence. Dr. Lopez co-founded Latina Child Care Providers In Action (LCCPIA) in 1998; a non-profit organization whose mission is to foster economic development in the Latina community.



Marion Malcome, Ph.D.

Assistant Professor

mmalcome@luc.edu

Dr. Malcome's scholarship and community work focuses on reducing health and mental health disparities within marginalized communities of color. Informed by more than a decade of clinical social work practice in community mental health, her research is situated at the intersection of race(ism), place, and mental health. Using quantitative and qualitative methodologies, Dr. Malcome centers the lived experiences of Black mothers to examine the long-term mental health impact of exposure to multi-contextual racism, violence, and other stressors within high-burden urban neighborhoods and communities to inform the development and testing of anti-racist, culturally relevant mental health practices and policies.

CONTRIBUTIONS TO SCHOLARSHIP CLUSTERS: Individual & Family Well-Being (*Behavioral Health & Wellness, Health Equity, Integrated Systems of Care*); Just Society (*Race, Gender & Sexuality; Poverty, Housing, Insecurity & Homelessness*); Stronger Social Fabric (*Practice Methods, Theories & Education*)



James Marley, Ph.D.

Associate Professor

jmarley@luc.edu

Dr. Marley has over 35 years of social work practice experience in adult mental health and family therapy. He is the author and co-author of numerous articles and books in family therapy and mental health. Dr. Marley has focused on professional ethics for many years and gives trainings and talks related to ethics, mental health, and family therapy. He continues to work on several state and federal grants and serves as a subject matter expert on projects focused on domestic terrorism, targeted violence prevention, and interventions. He is also co-chair of the ethics committee for a national network of clinicians and organizations focused on this work. Dr. Marley has been on the editorial board for the *Clinical Social Work Journal* since 2004 and is active in several national social work organizations.

CONTRIBUTIONS TO SCHOLARSHIP CLUSTERS: Individual & Family Well-being (*Youth, Adults, & Older Adults: Development Concerns, Well-being, & Resilience, Behavioral Health & Wellness, Health Equity, & Integrated System of Care*); Stronger Social Fabric (*Practice Methods, Theories, & Education*)



Christie Mason, Ph.D.

Clinical Associate Professor

cmason3@luc.edu

Dr. Mason teaches practice and human behavior courses at LUC/SSW. She has more than 20 years of clinical practice experience with clients across the lifespan, specializing in working with children who have experienced trauma. Dr. Mason's areas of interest include neuroscience in social work education, play therapy, and adoption and attachment.



Ivan Medina, MSW

Clinical Instructor

imedina@luc.edu

Professor Medina is a practicing social worker who incorporates his rich community experience into his teaching within the classroom. He has served on several non-profit boards across Chicago and teaches in areas including policy, non-profit management, philanthropy, and service delivery.



Goutham M. Menon, Ph.D.

Professor

gmenon@luc.edu

Dr. Menon's expertise lies in the utilization of information and communication technologies and leadership, innovation, and strategy. He has been actively involved in various leadership roles at the Council on Social Work Education, including serving as an elected member of the Board of Directors. He served on the board of the National Association of Deans and Directors (NADD) as Vice-President and Program Chair and as Treasurer of the human services Information Technology association (husITa). Dr. Menon also served on the International Consortium for Social Development as Vice-President and then as Secretary General for a decade. His current focus is on improving access; mitigating affordability and managing student debt; reform of social work licensure; strategic planning; and change management. He teaches in the areas of macro practice and policy and provides consultation on social work accreditation. Dr. Menon is the Editor of *Best Practices in Mental Health* and is the CEO of the Network for Social Work Management.

CONTRIBUTIONS TO SCHOLARSHIP CLUSTERS: Just Society (*Race, Gender & Sexuality; Employment & Work*)



Terry Northcut, Ph.D.

Professor; Ph.D. Program Director; Liaison and Coordinator of Advanced Psychotherapy Certificate Program; Lucian and Carol Welch Matusak, Endowed Professor; Director of Global Initiatives

tnorthc@luc.edu

Dr. Northcut's scholarship and teaching in the MSW and PhD programs focuses on social work pedagogy, religion, and spirituality in clinical social work, bridging psychodynamic and cognitive-behavioral therapy. Dr. Northcut served as the Faculty Facilitator for the Loyola Graduate School Teaching Effectiveness Seminar (2024-2025), overseeing the mentoring of new instructors. In addition, she is collaborating with interdisciplinary colleagues to better prepare nontraditional PhD applicants to apply for and succeed in doctoral education through the Trained to Go: Pathways to PhD program which includes culturally aware mentoring training for faculty. She also coordinates the Social Work Supervisory training in collaboration with the Adelphi Social Work Fellows Program. Dr. Northcut continues to practice, supervise, and consult as a licensed clinical social worker in Chicago.

CONTRIBUTIONS TO SCHOLARSHIP CLUSTERS: Just Society (*Employment & Work*); Stronger Social Fabric (*Practice Methods, Theories, & Education*)



John Orwat, Ph.D.

Professor; Associate Dean for Faculty Development; Co-Director, C-FIRST

jorwat@luc.edu

Dr. Orwat's research and teaching interests are in health services research, health and behavioral health policy, and clinical practice. He has successfully received numerous HRSA and SAMHSA grants over the years supporting student learning in areas such as the SBIRT model, interprofessional practice, behavioral health, workforce development, and substance use. Dr. Orwat also serves as Co-Director of the Center for Field Innovation, Research, Strategy, and Training (C-FIRST) at LUC/SSW.

CONTRIBUTIONS TO SCHOLARSHIP CLUSTERS: Individual & Family Well-being (*Behavioral Health*); Stronger Social Fabric (*Practice Methods, Theories, & Education*)



Nathan H. Perkins, Ph.D.

Associate Professor

nperkins2@luc.edu

Dr. Perkin's professional and research interests include physical and emotional sibling violence, family violence, mental health issues, and social work education and pedagogy. His research explores parental perceptions of physical and emotional sibling violence as parents typically serve as the gatekeepers for the behaviors between their children. He also explores the lack of policy that exists to address physical and emotional sibling family violence with the hope that policies and laws specifically addressing this form of family violence will one day be created and implemented throughout the U.S.

CONTRIBUTIONS TO SCHOLARSHIP CLUSTERS: Individual & Family Well-being (*Behavioral Health*); Stronger Social Fabric (*Practice Methods, Theories, & Education*)



Investing in faculty development is an important way that we fulfill our mission and ensure that our research, scholarship, and teaching have the greatest impact."

—JOHN ORWAT, PH.D., ASSOCIATE DEAN FOR FACULTY DEVELOPMENT



Kate Phillippo, Ph.D.
Professor; Associate Dean, The Graduate School
kphillippo@luc.edu

Dr. Phillippo's work centers on youth experiences of schools and schooling, policy and practice attunement to youth needs, and on how to help make schools growthful places for young people. Her research examines how stakeholders take up and carry out education policy and practice, particularly equity-oriented urban education policy and student wellness policy, how local, organizational, and professional contexts shape that enactment, and implications for racial and educational equity.

CONTRIBUTIONS TO SCHOLARSHIP CLUSTERS: Individual & Family Well-Being (*Youth, Adults & Older Adults: Development Concerns, Well-Being & Resilience*); Just Society (*Race, Gender & Sexuality*); Stronger Social Fabric (*Practice Methods, Theories & Education*)



Julia Pryce, Ph.D.
Professor; Faculty Director, Fostering Connections Training Institute; Director of Mission, Water Tower Campus, Office of Mission Integration
jpryce@luc.edu

Dr. Pryce believes in the transformative potential of relationships, and the ways positive non-parental adults can facilitate collaborative growth with the young people they support. Her research focuses on the role of mentoring in the fields of youth development and child welfare. Dr. Pryce teaches in the areas of developmental theory, research, and youth development, and was nominated in 2023 for the St. Ignatius of Loyola Teaching Award.

CONTRIBUTIONS TO SCHOLARSHIP CLUSTERS: Individual & Family Well-Being (*Youth, Adults & Older Adults: Development Concerns, Well-Being & Resilience*)



The collaborative, interdisciplinary, student-oriented, and mission-focused environment at Loyola supports high-impact research conducted in solidarity with the most vulnerable.”

—ABHA RAI, ASSISTANT PROFESSOR



Abha Rai, Ph.D.
Assistant Professor; Associate Director, Center for Immigrant and Refugee Accompaniment (CIRA)
arai4@luc.edu

Dr. Rai is an internationally recognized community-based scholar with over 15 years of experience advancing social work practice and research across global contexts. Her expertise lies in promoting mental health equity among vulnerable populations, with a strong emphasis on addressing gender-based violence. As an interventionist and implementation science researcher, Dr. Rai's work bridges rigorous research with a real-world impact. Her recent projects explore the innovative use of wearable technologies and artificial intelligence to enhance mental health interventions, reflecting her commitment to interdisciplinary solutions. She brings deep methodological expertise in both quantitative and qualitative approaches, including intervention design, survey development, and community-engaged research. Dr. Rai is currently spearheading a mental health intervention tailored to low-income communities in Chicago. She was named a Fellow of the Society for Social Work and Research (SSWR), where she also serves on the board. In addition, she contributes her leadership to Sanjeevani, a Chicago-based community organization dedicated to supporting underserved populations.

CONTRIBUTIONS TO SCHOLARSHIP CLUSTERS: Individual & Family Well-being (*Violence: Lifespan & Structural*); Stronger Social Fabric (*Migration, Refugees & Human Mobility*)



Celeste Sanchez, Ph.D.
Postdoctoral Research Fellow
csanchez11@luc.edu

Dr. Sanchez's research interests are centered around Latine immigrant communities and underrepresented students within social work education. Her social work experience includes working with youth in group home settings in Central America and working with Central American families seeking immigration relief in Southern California.

CONTRIBUTIONS TO SCHOLARSHIP CLUSTERS: Just Society (*Advocacy, Social Justice, Environmental, International & Global Issues*); Stronger Social Fabric (*Migration, Refugees & Human Mobility; Practice Methods, Theories & Education*)



Guillermo Sanhueza, Ph.D.
Associate Professor
gsanhueza@luc.edu

Dr. Sanhueza's scholarship focuses on understanding the multiple intersections between crime and its social causes, prisons and reintegration, neighborhoods, violence and the community environments. He has conducted extensive research and research-and-development projects in Chile along with interdisciplinary teams including scholars from law, engineering, public health, sociology, and geography to both understand and create solutions for systemic problems, such as lack of effective rehabilitation. Some of his projects include the integration of data to support rehabilitative outcomes in Chile; the exploration of the rule of law within the Illinois prison system; the role of faith-based organizations in supporting formerly incarcerated individuals in Illinois; and the relationship between obesity and accelerated, induced aging in Chile.

CONTRIBUTIONS TO SCHOLARSHIP CLUSTERS: Just Society (*Advocacy, Social Justice, Environmental, International & Global Issues*); Stronger Social Fabric (*Practice Methods, Theories & Education*)



Shirley Simon, MSW
Associate Professor
ssimon@luc.edu

Professor Simon is committed to group work education as well as students' ongoing professional development. For a number of years, she has been a leader at the International Association of Social Work with Groups (IASWG) where she was previously recognized as the International Honoree. Professor Simon has mentored over 250 students in making presentations at international conferences. She has also developed and implemented the successful Group Work Continuing Education Series, a virtual program of contemporary group work trainings offered by international experts. In addition, Professor Simon developed and co-facilitates the LUC/SSW part-time Faculty Teaching Forum. She serves as the Book Review Editor for North America for the journal *Groupwork*. Her scholarly interests include contemporary challenges in group work education and practice, and hybrid-online social work.

CONTRIBUTIONS TO SCHOLARSHIP CLUSTERS: Just Society (*Advocacy, Social Justice, Environmental, International & Global Issues*); Stronger Social Fabric (*Practice Methods, Theories & Education*)





Jonathan Singer, Ph.D.
Professor
jsingerl@luc.edu

Dr. Singer's research and scholarship are centered on youth suicide and social work technology. He is an NASW Pioneer, author of over 90 publications, and his research has been featured in national and international media outlets including NPR, BBC, Fox, Time Magazine, and The Guardian. In 2024, Routledge published the second edition of his best-selling textbook "Suicide in Schools: A Practitioner's Guide to Multi-level Prevention, Assessment, Intervention, and Postvention," and he was named a Fellow of the Society for Social Work and Research.

CONTRIBUTIONS TO SCHOLARSHIP CLUSTERS: Individual & Family Well-Being (*Behavioral Health & Wellness, Health Equity, & Integrated Systems of Care*); Stronger Social Fabric (*Practice Methods, Theories & Education; Technology & Innovation*)



Shweta Singh, Ph.D.
Associate Professor, Assistant Director, Online MSW Program
ssingh9@luc.edu

Dr. Singh's research is on women's identity and well-being; evaluation; and social work and international social development. Her international work experience includes research and advocacy projects with international and local development agencies in India on issues of child rights, child abuse and social policy. Dr. Singh is also an author of fiction, plays, and self-help manuals focused on the Indian Subcontinent. In 2016, she was awarded the Service Award in Recognition of Outstanding Community Service in Media and Social Work, Clerk of the Circuit Court of Cook County for her 10 years in community radio work on the show Global Desi World and Women. She is the founder of a publishing and coaching company known as Think Women Company for women, motivation, and mediation.



Jeanne Sokolec, Ed.D.
Clinical Associate Professor, BSW Program Director
jsokole@luc.edu

Dr. Sokolec is an alumna of the School of Social Work and she has actively worked in a number of faculty and administration positions at Loyola University Chicago over the past 25 years. Her specialty is policy and older adults and she advances the infusion of content on older adults and healthcare disparities into bachelor level courses.



Kathryn Tyson McCreia, Ph.D.
Professor, PI, Empowering Counseling Program
ktyson@luc.edu

Dr. Tyson McCreia has served as Principal Investigator for the Empowering Counseling Program, Participatory Science Initiative (ECP-PSI) since 2006, which has educated 62 graduate and doctoral social workers, served over 1,000 youth, and produced numerous dissertations, journal articles, and presentations. Her research utilizes participatory action and qualitative methods to optimize social services with: 1) youth experiencing marginalization due to race and income; 2) incarcerated fathers experiencing low-income; and 3) persons with disabilities to advance supported decision-making. The ECP-PSI's innovative participatory and rigorous mixed methods research are human rights and strengths-focused. The aim of ECP-PSI is to advance translational science so better interventions can be scaled to build opportunity and self-determination for persons experiencing marginalization and residing in under-resourced communities.

CONTRIBUTIONS TO SCHOLARSHIP CLUSTERS: Individual & Family Well-being (*Youth, Adults, & Older Adults: Development Concerns, Well-Being, & Resilience*); Just Society (*Advocacy, Social Justice, Environmental, International & Global Issues*)



Maria Vidal de Haymes, Ph.D.
Professor, Director, Center for Immigrant & Refugee Accompaniment (CIRA)
mvidal@luc.edu

Dr. Vidal de Haymes' grant activity and published research focuses on unaccompanied immigrant minors, immigrant well-being and integration; child welfare; and social work education. She is co-editor of the Journal of Poverty and serves on local, national, and international boards including the Taller de Jose, National Pastoral Migratoria, the Jesuit Migration Network of Central and North America, and the Solidarity with Migrants and Refugees Working Group of the International Association of Jesuit Universities. Dr. Vidal de Haymes also teaches social welfare and immigration policy courses.

CONTRIBUTIONS TO SCHOLARSHIP CLUSTERS: Individual & Family Well-being (*Youth, Adults, & Older Adults: Development Concerns, Well-Being, & Resilience*); Just Society (*Advocacy, Social Justice, Environmental, International & Global Issues*); Stronger Social Fabric (*Migration, Refugees & Human Mobility; Practice Methods, Theories & Education*)



Maria Wathen, Ph.D.
Associate Professor
mwathen@luc.edu

Dr. Wathen's research advances social justice in the access and provision of social services to vulnerable groups at the intersection of social policy, public, nonprofit, and volunteer arenas and the influence of cultural forces utilizing theories of social change, civil society development, organizations, globalization, and inequality. She focuses on organizations that provide social supports, the macro-level influences (such as legislation and policies) on their operation, and their efficacy in responding to on-the-ground needs of persons requiring a social safety net.

CONTRIBUTIONS TO SCHOLARSHIP CLUSTERS: Just Society (*Advocacy, Social Justice, Environmental, International & Global Issues*); Stronger Social Fabric (*Poverty, Housing Insecurity & Homelessness*)



Marcy Wilroy, DSW
Clinical Assistant Professor, CADC Specialization Director
mwilroy@luc.edu

Dr. Wilroy's experience in social work spans over 30 years, which includes the last 12 years in higher education. As a clinical professor at LUC, Dr. Wilroy has empowered students to want to learn with her teaching style of having the students explore their own biases and cultural humility. The Certified Alcohol and Drug Counseling (CADC) program, for which she serves as director, received a multi-year grant award from the Illinois Certification Board totaling over \$1M to support students to earn their CADC to help combat the substance use crisis that is present today. She is also currently conducting research that includes the use of forgiveness in social work practice, along with the use of spirituality for change.



Faculty are engaged in meaningful research and scholarship activities, interprofessional education and practice, designing and implementing innovative curricula and specializations."

—MICHAEL DENTATO, ASSOCIATE DEAN FOR RESEARCH

Emeritus Faculty



Susan Grossman, Ph.D.
Professor Emeritus



Terri Kilbane, Ph.D.
Associate Professor Emeritus



Marta Lundy, Ph.D.
Professor Emeritus



Doctoral Students and Candidates



Emmanuel Agyei-Poku, MSW
eagyeipoku@luc.edu

RESEARCH INTERESTS: Child rights and welfare, childhood trauma, adolescent mental health, family systems, human trafficking, migration and resettlement, community-based practices



Zaynab Berety, MSW
Sachs Foundation Graduate Scholarship
jberety@luc.edu

RESEARCH INTERESTS: Resettlement practices of immigration agencies, Black immigrants navigation of racial identity within the context of their new lives in the U.S.



Chinwe (Blessing) Egbuogu, MSW
cegbuogu@luc.edu

RESEARCH INTERESTS: Health equity, maternal and child health, family-centered treatment for substance use disorders, social justice activism to promote inclusivity



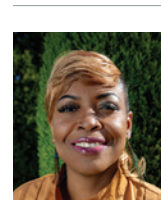
Elisa E. Leyva Cea, MA
eleyvacea@luc.edu

RESEARCH INTERESTS: Clinical interventions for immigrants, refugees, and mixed-status communities; transgenerational, complex trauma, and PTSD; community-based interventions



Rodney Allen, AM
rallen1@luc.edu

RESEARCH INTERESTS: Parental inclusion in IEP and 504 Plans, children and adolescents with mental health diagnoses



Alicia Bradford, MSW
abradford@luc.edu

RESEARCH INTERESTS: Intersections of policy advocacy and community organizing, health policy, policy advocacy and Black maternal health, social justice interventions



Katrina Herweh, MASW, LISW, CDCA
kherweh@luc.edu

RESEARCH INTERESTS: Pediatric trauma and medical trauma, screening tool for pediatric trauma, hospital discharge and mental health treatment referral, impact of medical events



Sabina Lumesberger-Draschl, AM
slumesberger@luc.edu

RESEARCH INTERESTS: Environmental justice; ecosocial work theory and practice; international comparative welfare studies; and the application of human rights-based approaches to social policy and practice



David Apopo, MSW
akennedy7@luc.edu

RESEARCH INTERESTS: Equity, social justice, social and public policy, poverty, inclusion



Marjorie E. Colindres, MSW, LCSW
Loyola University Chicago, Graduate School, Attoh Fellowship
mcolind@luc.edu

RESEARCH INTERESTS: School social work, mental health in school settings, school social workers education, Latinx students and bilingualism, social workers working with immigrants and refugees



Ruri Kim, MA, LPC
rkim8@luc.edu

RESEARCH INTERESTS: Mental health and social justice, mental health and workforce development; culturally-responsive and anti-oppressive mental health prevention, intervention, and postvention



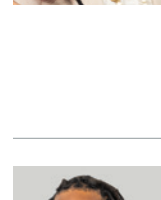
Neeraj Mishra, Ph.D., MSW
nmishra@luc.edu

RESEARCH INTERESTS: History and philosophy of social work; critical disability studies and social work pedagogy; mindfulness and social justice; Qualitative research methodology



Yigermal Demissie Ayalew, MSW
Loyola University Chicago, Graduate School, Teaching Scholar Fellow
yayalew@luc.edu

RESEARCH INTERESTS: Nonprofit organizational change and adaptation strategies; participatory program development and evaluation; intergenerational dynamics in immigrant-serving organizations; methodology and the nature of knowledge in social work



Larry (Leo) B. Davis, MPH, MSW
Ignatian Fellow for Social Justice, Health Policy Research Scholar
Ldavis17@luc.edu

RESEARCH INTERESTS: Black fatherhood engagement, child/ foster youth development, social policy, mass incarceration, homelessness, mental health, social entrepreneurship, poverty, and racism



Sungsim Lee, MA, MSW
slee43@luc.edu

RESEARCH INTERESTS: Spirituality, religion, and mental health for older adults, eco-spiritual social work, spiritually based practices/interventions for human service organizations



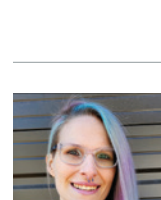
Ahyun Moon, MSW, MA, MPP
amoon1@luc.edu

RESEARCH INTERESTS: Domestic violence, adverse childhood experience, attachment, psychological self-sufficiency, economic self-sufficiency, transition of vulnerable youth to adulthood



Damilola Grace Ayetan, MSW, LSW
dayetan@luc.edu

RESEARCH INTERESTS: Child welfare, family caregiving, mental health equity, trauma-informed practice, and social policy



Kimberly Dressman, MSW
kdressman@luc.edu

RESEARCH INTERESTS: LGBTQIA+ community and the intersection of research, social work practice, and social justice. Implications of health care policies and practices on gender diverse individuals



Kai Lehocky, MSW
klehocky@luc.edu

RESEARCH INTERESTS: Sexual and gender minorities (with a focus on gender-diverse identities), neurodiversity (with a focus on Autism and twice-exceptionality), post-colonial resilience, and public policy advocacy



Sharitza Rivera, AM, LCSW
srivera4@luc.edu

RESEARCH INTERESTS: First-generation and low college students, peer mentorship, social and cultural capital, poverty and welfare in the United States, social class, systematic change and innovation



Brianna Sorensen, MSW, LCSW, CADC
bsorensen2@luc.edu

RESEARCH INTERESTS: LGBTQ+ studies, fat studies, mezzo and macro practice, harm reduction with eating disorders and substance use



**Adriane "Addie" Van Zwoll,
MJ, LCSW, Ph.D. (2025)**

avnswo@luc.edu

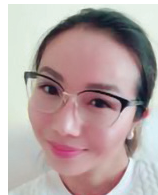
RESEARCH INTERESTS: School-based mental health, juvenile justice, trauma-informed care, interprofessional practice



Heather Watson, MSW, Ph.D. (2025)

hwatson2@luc.edu

RESEARCH INTERESTS: Mental health, factors leading to healthy child development, evidence-based clinical practice, disadvantaged youth and families, social justice, social services disparities



Diane Williams, MSW, MPP, Ph.D. (2025)

dwilliams28@luc.edu

RESEARCH INTERESTS: Aging and social welfare, aging social policy, barriers to housing stability for older adults, housing security and aging, senior housing, successful aging, productive aging



Nora Wynn, AM

nwynn@luc.edu

RESEARCH INTERESTS: Adolescent sexual health and development, sex education, peer-led education, positive youth development, feminist theory, participatory research methods



Rachel Young, MSW

Loyola University Chicago, Center for Urban Research and Learning (CURL) Graduate Fellow

ryoung9@luc.edu

RESEARCH INTERESTS: Environmental social work; use of nexus thinking to analyze interrelationships among systems to address resource challenges; technology and social policy; equitable housing and food systems

Doctoral Student and Candidate Fellowship and Dissertation Awards

Yigermal Demissie Ayalew

Loyola University Chicago, Graduate School, Teaching Scholar Fellow

Doctoral candidate Yigermal Demissie Ayalew, MSW, received the Loyola University Chicago, Graduate School, Teaching Scholar Fellowship for the 2024-25 academic year. This competitive fellowship program is designed to encourage advanced graduate students in their preparation as scholar-teachers by mentoring new graduate student teachers as a part of the Graduate School's Teaching Effectiveness Seminar. In this role, Yigermal mentored other graduate students in important teaching skills, including developing effective communication practices, developing an identity as a scholar and teacher, and developing mentorship skills and serving as mentors.

Zaynab Berety

Sachs Foundation Graduate Scholarship

Doctoral student Zaynab Berety, MSW, was awarded the Sachs Foundation Graduate Scholarship. This is a competitive scholarship available to those who were awarded the equally competitive Undergraduate Sachs Scholarship and who will, or have, received their undergraduate degree within the last three years and are pursuing a graduate degree. The scholarship provides monetary support to students and candidates for up to four years, depending on their course of study. Zaynab will use the funding to support herself while completing coursework and intends to reapply as she moves toward comprehensive exams and, ultimately, her dissertation.

Rachel Young

Loyola University Chicago, Center for Urban Research and Learning (CURL) Graduate Fellow

Doctoral student, Rachel Young, MSW, continues her work as a Loyola University Chicago, Center for Urban Research and Learning (CURL) Graduate Fellow. CURL places Fellows in collaborative research projects with community-based settings of various kinds including social service agencies, health care providers, businesses and government in Chicago's city and suburbs. Fellows gain experience in collaborative research strategies and community-based research. Rachel has partnered with Loyola University Chicago faculty and community-based researchers to examine various facets of housing programs and housing policy development and implementation throughout the city and the surrounding area.



**LOYOLA UNIVERSITY SCHOOL OF SOCIAL WORK
OFFICE OF RESEARCH DEVELOPMENT**

Maguire Hall, 5th Floor • 820 North Michigan Avenue • Chicago, IL 60611
312.915.7005 • LUC.edu/socialwork

